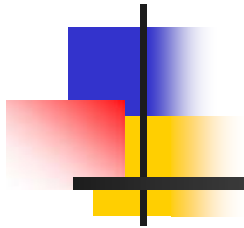


Security & Safty

ISO9001
ISO14001

BURGLAR – RESISTIVE SAFES & FIRE – RESISTIVE SAFES



Kumahira



September, 2015

Copyright (C) 2015 Kumahira Company Limited. All Rights Reserved.

YOU FEEL SECURE WITH KUMAHIRA SUPERIOR SAFE SERIES

KUMAHIRA Burglar-Resistive Safes, Fire-Resistive Safes and Special Fire-Resistive Safes have the purpose and feature for each. Burglar-Resistive Safe is suitable to protect money, important documents against robbery and fire. When you attach importance to Fire-Resistance, you can choose Fire-Resistive Safe which protects the documents from fire.

You need to choose Special Fire-Resistive Safe when you want to protect magnetic media from fire.

You can choose the best safe from KUMAHIRA SAFE SERIES.

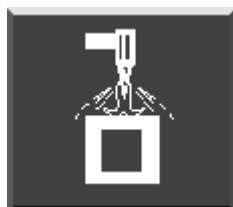
BURGLAR-RESISTANCE PERFORMANCE

KUMAHIRA ALLOY - Exclusive Protective Armor Plate -

Kumahira Alloy has a superior protection feature against acetylene torch, drill and attack.

<GM-30b・GM-53b>

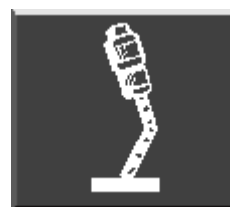
ACETYLENE TORCH TEST



An oxy-acetylene torch cannot penetrate Kumahira Alloy.



DRILL TEST



Proved completely effective against attacks by super-hand tip drill.



SHOCK TEST



1,500 kg metal ball was dropped on a slab of Kumahira Alloy from 4m height. Kumahira Alloy was not damaged.



BURGLAR-RESISTANCE PERFORMANCE

BURGLAR-RESISTANCE STANDARDS

(Authorized by 日本セーフ・ファニチュア協同組合連合会 :

The Federation of Japan Safe Furniture Cooperatives)

- Burglar-Resistance Standards in JAPAN -

Burglar-Resistance Standards are divided into various classes (TRTL/ TL/ TS) depend on the test method and tool.

TRTL (Endurance Test against Torch and Tool)

TRTL is the standard to be endured for the specified time by burning off with gas burner and breaking with tools like hammer or drill. Test time is 60 min. for TRTL-60 and 15 min. for TRTL-15.

<GM-30b・GM-53b (TRTL-60)/ GX Series (TRTL-15)>



TL (Endurance Test against Tool)

TL is the standard to be endured for the specified time by breaking with tools like hammer or drill.

Test time is 30 min. for TL-30 and 15 min. for TL-15.

<GX Series (TL-30)/ PS Series (TL-15)>



TS (Endurance Test against Tool)

TS is the standard to be endured for the specified time by breaking tools like bar or graver. Test time is 15 min. for TS-15.

<FM4, FM2, D Series>



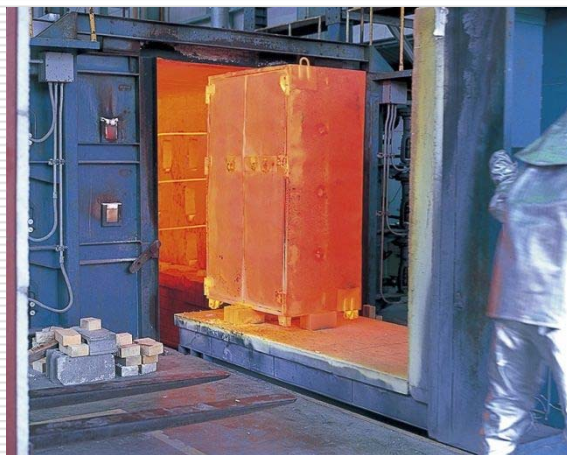
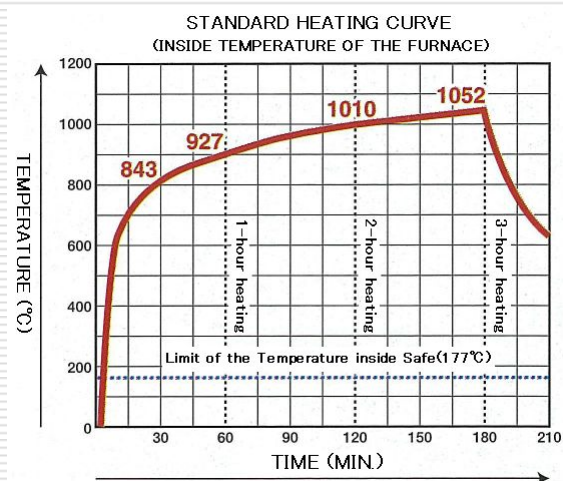
FIRE-RESISTANCE PERFORMANCE

FIRE-RESISTANCE STANDARDS

(Authorized by JIS ; Japanese Industrial Standards Committee)

- Standard Heating Test for Paper -

The test pieces (newspaper) are put inside the safe and the safe is heated in the furnace for necessary hours.
(Temperature inside the furnace - 1-hour : MAX 927°C 2-hour : MAX 1010°C 3-hour : MAX 1052°C)
The inside temperature of the safe should be kept under 177°C during the test.
After heating, the test pieces are checked.



FIRE-RESISTANCE PERFORMANCE

FIRE-RESISTANCE STANDARDS

(Authorized by JIS ; Japanese Industrial Standards Committee)

- Rapid Heating/ Impact Test for Paper -

Rapid heating and impact test is the test to confirm the strength of the safe in case of the fire accident at gas station or chemical factory which is supposed to rapid high-temperature.

Before putting the safe into the furnace, heat the furnace and keep at 1090°C. Then, put the safe into the furnace and heat it for 30 min. at 1090°C.

Additionally keep heating 30 min. for 3-hour fire-resistance safe

15 min. for 2-hour fire-resistance safe

0 min. for 1-hour fire-resistance safe,

and drop the safe from 9.1m height.

And then, start heating again 60 min. for 3-hour fire-resistance safe

45 min. for 2-hour fire-resistance safe

30 min. for 1-hour fire-resistance safe.

After the heating, wait until the safe cools down and check the damage of the body and test pieces (newspaper) in the safe.



MARKS

BURGLAR-RESISTANCE (THE FEDERATION OF JAPAN SAFE FURNITURE COOPERATIVES)



TRTL-60
Against torch and tool 60 min.



TRTL-15
Against torch and tool 15 min.



TL-30
Against tool 30 min.



TL-15
Against tool 15 min.



TS-15
Against tool 15 min.

FIRE-RESISTANCE for PAPER (JIS : JAPANESE INDUSTRIAL STANDARDS)



3-hour fire-resistance



2-hour fire-resistance



1-hour fire-resistance



Rapid heating/ Impact resistance

FIRE-RESISTANCE for FLEXIBLE DISK CARTRIDGE (JIS : JAPANESE INDUSTRIAL STANDARDS)



FR•1T
1-hour fire-resistance

BURGLAR - RESISTIVE SAFE

GM Series :



GX Series :



TOP LEVELED SAFE IN JAPAN WITH KUMAHIRA ALLOY
TRTL-60 BY JAPAN SAFE FURNITURE
3-HOUR FIRE-RESISTANCE AND RAPID HEATING/
IMPACT RESISTANCE BY JIS : PR-3TKS

GM Series



GM-30b

OUTSIDE : W720 X D793 X H1109 mm
INSIDE : W399 X D396 X H614 mm
NET WEIGHT : 1040 kg
CAPACITY : 127 lit.
LOCK :
2 X 4-WHEEL COMBINATION LOCK
1 X CYLINDER LOCK
WITH RELOCKING DEVICE
ACCESSORIES :
2 X ADJUSTABLE SHELF
1 X DRAWER
DRAWER INSIDE :
W357 X D323 X H104 mm



GM-53b

OUTSIDE : W814 X D858 X H1699 mm
INSIDE : W493 X D461 X H1204 mm
NET WEIGHT : 1795 kg
CAPACITY : 322 lit.
LOCK :
2 X 4-WHEEL COMBINATION LOCK
1 X CYLINDER LOCK
WITH RELOCKING DEVICE
ACCESSORIES :
3 X ADJUSTABLE SHELF
1 X DRAWER
DRAWER INSIDE :
W451 X D388 X H104 mm

GX Series



GX-12b

OUTSIDE : W622.5 X D651 X H1165 mm
INSIDE : W376 X D349 X H723 mm
NET WEIGHT : 650 kg
CAPACITY : 122 lit.
LOCK :
2 X 4-WHEEL COMBINATION LOCK
1 X CYLINDER LOCK
WITH RELOCKING DEVICE
ACCESSORIES :
2 X ADJUSTABLE SHELF
1 X DRAWER
DRAWER INSIDE :
W350 X D273 X H103 mm



GX-28b

OUTSIDE : W758.5 X D756 X H1440 mm
INSIDE : W512 X D454 X H995mm
NET WEIGHT : 1000 kg
CAPACITY : 280 lit.
LOCK :
2 X 4-WHEEL COMBINATION LOCK
1 X CYLINDER LOCK
WITH RELOCKING DEVICE
ACCESSORIES :
3 X ADJUSTABLE SHELF
1 X DRAWER
DRAWER INSIDE :
W486 X D399 X H103 mm



BURGLAR - RESISTIVE SAFE

TL-15 BY JAPAN SAFE FURNITURE
3-HOUR FIRE-RESISTANCE AND RAPID HEATING/
IMPACT RESISTANCE BY JIS : PR-3TKS

PS Series – combination lock type -



PS-06b

OUTSIDE : W622.5 X D654 X H700 mm
INSIDE : W376 X D349 X H303 mm
NET WEIGHT : 325 kg
CAPACITY : 57 lit.
LOCK :
1 X 3-WHEEL COMBINATION LOCK
1 X CYLINDER LOCK
WITH RELOCKING DEVICE
ACCESSORIES :
1 X ADJUSTABLE SHELF
1 X DRAWER
DRAWER INSIDE :
W359 X D276 X H63 mm



PS-12b

OUTSIDE : W622.5 X D654 X H1165 mm
INSIDE : W376 X D349 X H730 mm
NET WEIGHT : 495 kg
CAPACITY : 122 lit.
LOCK :
1 X 3-WHEEL COMBINATION LOCK
1 X CYLINDER LOCK
WITH RELOCKING DEVICE
ACCESSORIES :
2 X ADJUSTABLE SHELF
1 X DRAWER
DRAWER INSIDE :
W359 X D276 X H101 mm



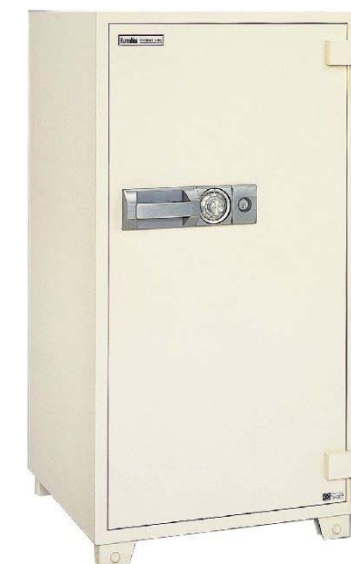
PS-21b

OUTSIDE : W758.5 X D759 X H1165 mm
INSIDE : W512 X D454 X H853 mm
NET WEIGHT : 650 kg
CAPACITY : 212 lit.
LOCK :
1 X 3-WHEEL COMBINATION LOCK
1 X CYLINDER LOCK
WITH RELOCKING DEVICE
ACCESSORIES :
2 X ADJUSTABLE SHELF
OPTIONAL ITEM : 1 X DRAWER
DRAWER INSIDE :
W495 X D403 X H101 mm



PS-28b

OUTSIDE : W758.5 X D759 X H1440 mm
INSIDE : W512 X D454 X H1128 mm
NET WEIGHT : 810 kg
CAPACITY : 280 lit.
LOCK :
1 X 3-WHEEL COMBINATION LOCK
1 X CYLINDER LOCK
WITH RELOCKING DEVICE
ACCESSORIES :
3 X ADJUSTABLE SHELF
OPTIONAL ITEM : 1 X DRAWER
DRAWER INSIDE :
W495 X D403 X H101 mm



PS-36b

OUTSIDE : W758.5 X D759 X H1790 mm
INSIDE : W512 X D454 X H1478 mm
NET WEIGHT : 965 kg
CAPACITY : 364 lit.
LOCK :
1 X 3-WHEEL COMBINATION LOCK
1 X CYLINDER LOCK
WITH RELOCKING DEVICE
ACCESSORIES :
4 X ADJUSTABLE SHELF
OPTIONAL ITEM : 1 X DRAWER
DRAWER INSIDE :
W495 X D403 X H101 mm

BURGLAR - RESISTIVE SAFE

3-HOUR FIRE-RESISTANCE

PS Series – key storage type -

CARD OPERATION TYPE

STANDARD TYPE



PS-06KCd

LOCK :
1 X 3-WHEEL COMBINATION LOCK
WITH RELOCKING DEVICE
ACCESSORIES :
1 X ADJUSTABLE SHELF
1 X DRAWER



PS-12KCd

LOCK :
1 X 3-WHEEL COMBINATION LOCK
WITH RELOCKING DEVICE
ACCESSORIES :
2 X ADJUSTABLE SHELF
1 X DRAWER



PS-06Kb/ 06Kb-O

LOCK :
1 X 3-WHEEL COMBINATION LOCK
WITH RELOCKING DEVICE
ACCESSORIES :
1 X ADJUSTABLE SHELF
1 X DRAWER



PS-12Kb-D

LOCK :
1 X 3-WHEEL COMBINATION LOCK
WITH RELOCKING DEVICE
ACCESSORIES :
2 X ADJUSTABLE SHELF
1 X DRAWER

MODEL	OUTSIDE DIM. (mm)			INSIDE DIM. (mm)			NET WEIGHT (kg)	CAPACITY (lit.)	OTHERS
	W	D	H	W	D	H			
PS-06KCd	622.5	654	840	376	349	283	350	57	WITH CONTROL DEVICE
PS-12KCd			1305			710	525	122	
PS-06Kb			700			303	325	57	—
PS-06Kb-O			700			263			COUNTER
PS-06Kb-D			1165			690	495	122	TIMELOCK, COUNTER

The control device takes records of the door opening/ closing. The counter is the display the number of opening/ closing.



BURGLAR - RESISTIVE SAFE

2-HOUR FIRE-RESISTANCE AND RAPID HEATING/
IMPACT RESISTANCE BY JIS : PR-2TKS

DS Series – combination lock type -



AFTER THE BANK IS CLOSED,
CAN KEEP MONEY SAFELY
UNTIL NEXT WORKING DAY.

↓ DEPOSITORY BAG



DS-12b

OUTSIDE : W622.5 X D654 X H1530 mm
INSIDE : W376 X D349 X H679 mm
NET WEIGHT : 605 kg
CAPACITY : 122 lit.
LOCK :
1 X 3-WHEEL COMBINATION LOCK (DS-12b)
1 X CYLINDER LOCK
1 X CYLINDER LOCK FOR HEAD
WITH RELOCKING DEVICE
ACCESSORIES :
1 X ADJUSTABLE SHELF
CAPACITY :
17 KUMAHIRA DEPOSITORY BAG (APPROXIMATELY)

DS-21b

OUTSIDE : W758.5 X D759 X H1530 mm
INSIDE : W512 X D454 X H679 mm
NET WEIGHT : 780 kg
CAPACITY : 212 lit.
LOCK :
1 X 3-WHEEL COMBINATION LOCK (DS-12b)
1 X CYLINDER LOCK
1 X CYLINDER LOCK FOR HEAD
WITH RELOCKING DEVICE
ACCESSORIES :
1 X ADJUSTABLE SHELF
CAPACITY :
30 KUMAHIRA DEPOSITORY BAG (APPROXIMATELY)



FIRE - RESISTIVE SAFE

TS-15 BY JAPAN SAFE FURNITURE
4-HOUR FIRE-RESISTANCE
EQUIVALENT TO 4-HOUR FIRE RESISTANCE AND
RAPID HEATING/ IMPACT RESISTANCE BY UL

FM4 Series – combination lock type -



FM4-16

OUTSIDE : W705.5 X D728 X H1151 mm
INSIDE : W427 X D407 X H819 mm
NET WEIGHT : 475 kg
CAPACITY : 155 lit.
LOCK :
1 X 3-WHEEL COMBINATION LOCK
1 X CYLINDER LOCK
WITH RELOCKING DEVICE
ACCESSORIES :
2 X ADJUSTABLE SHELF
OPTIONAL ITEM : 1 X DRAWER
DRAWER INSIDE :
W405 X D342 X H105 mm

FM4-21

OUTSIDE : W705.5 X D728 X H1451 mm
INSIDE : W427 X D407 X H1119 mm
NET WEIGHT : 600 kg
CAPACITY : 211 lit.
LOCK :
1 X 3-WHEEL COMBINATION LOCK
1 X CYLINDER LOCK
WITH RELOCKING DEVICE
ACCESSORIES :
2 X ADJUSTABLE SHELF
OPTIONAL ITEM : 1 X DRAWER
DRAWER INSIDE :
W405 X D342 X H105 mm





FIRE - RESISTIVE SAFE

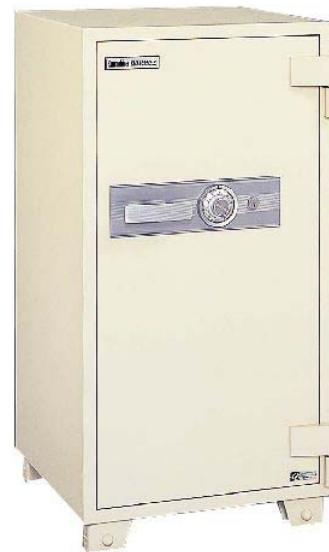
TS-15 BY JAPAN SAFE FURNITURE
2-HOUR FIRE-RESISTANCE AND RAPID HEATING/
IMPACT RESISTANCE BY JIS : PR-2TKS

FM2 Series – combination lock type -



FM2-06b

OUTSIDE : W578 X D632 X H700 mm
INSIDE : W376 X D348 X H333 mm
NET WEIGHT : 195 kg
CAPACITY : 61 lit.
LOCK :
1 X 3-WHEEL COMBINATION LOCK
1 X CYLINDER LOCK
WITH RELOCKING DEVICE
ACCESSORIES :
1 X ADJUSTABLE SHELF
1 X DRAWER
DRAWER INSIDE :
W359 X D276 X H63 mm



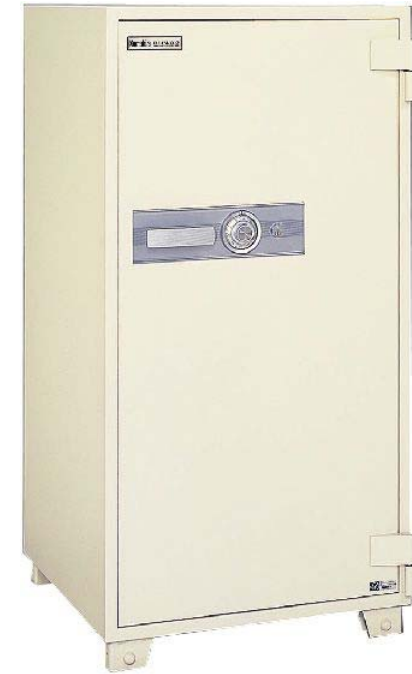
FM2-12b

OUTSIDE : W578 X D632 X H1135 mm
INSIDE : W376 X D348 X H730 mm
NET WEIGHT : 290 kg
CAPACITY : 122 lit.
LOCK :
1 X 3-WHEEL COMBINATION LOCK
1 X CYLINDER LOCK
WITH RELOCKING DEVICE
ACCESSORIES :
2 X ADJUSTABLE SHELF
1 X DRAWER
DRAWER INSIDE :
W359 X D276 X H101 mm



FM2-21b

OUTSIDE : W714 X D738 X H1135 mm
INSIDE : W512 X D454 X H853 mm
NET WEIGHT : 370 kg
CAPACITY : 212 lit.
LOCK :
1 X 3-WHEEL COMBINATION LOCK
1 X CYLINDER LOCK
WITH RELOCKING DEVICE
ACCESSORIES :
2 X ADJUSTABLE SHELF
OPTIONAL ITEM : 1 X DRAWER
DRAWER INSIDE :
W495 X D403 X H101 mm



FM2-28b

OUTSIDE : W714 X D738 X H1410 mm
INSIDE : W512 X D454 X H1128 mm
NET WEIGHT : 450 kg
CAPACITY : 280 lit.
LOCK :
1 X 3-WHEEL COMBINATION LOCK
1 X CYLINDER LOCK
WITH RELOCKING DEVICE
ACCESSORIES :
3 X ADJUSTABLE SHELF
OPTIONAL ITEM : 1 X DRAWER
DRAWER INSIDE :
W495 X D403 X H101 mm



FIRE - RESISTIVE SAFE

TS-15 BY JAPAN SAFE FURNITURE
2-HOUR FIRE-RESISTANCE AND RAPID HEATING/
IMPACT RESISTANCE BY JIS : PR-2TKS

FM2 Series – combination lock type -



FM2-36b

OUTSIDE : W714 X D738 X H1760 mm
INSIDE : W512 X D454 X H1478 mm
NET WEIGHT : 550 kg
CAPACITY : 364 lit.
LOCK :
1 X 3-WHEEL COMBINATION LOCK
1 X CYLINDER LOCK
WITH RELOCKING DEVICE
ACCESSORIES :
4 X ADJUSTABLE SHELF
OPTIONAL ITEM : 1 X DRAWER
DRAWER INSIDE :
W495 X D403 X H101 mm

FM2-72d

OUTSIDE : W1230 X D738 X H1760 mm
INSIDE : W1028 X D454 X H1478 mm
NET WEIGHT : 840 kg
CAPACITY : 723 lit.
LOCK :
1 X 3-WHEEL COMBINATION LOCK
1 X CYLINDER LOCK
WITH RELOCKING DEVICE
ACCESSORIES :
4 X ADJUSTABLE SHELF



FIRE - RESISTIVE SAFE

1-HOUR FIRE-RESISTANCE AND RAPID HEATING/
IMPACT RESISTANCE BY JIS : PR-1TKS

FA Series/ FB Series

FB4-2Se/ FB4-2De

OUTSIDE : W530 X D778 X H830 mm
DRAWER INSIDE :
W386 X D526 X H299 mm
NET WEIGHT : 190 kg
LOCK :
1 X 3-WHEEL COMBINATION LOCK (FB4-2De)
1 X CYLINDER LOCK
ACCESSORIES : 4 X PARTITION



PICTURE : FB4-2Se

FB4-4Se/ FB4-4De

OUTSIDE : W530 X D778 X H1574 mm
DRAWER INSIDE :
W386 X D526 X H299 mm
NET WEIGHT : 325 kg
LOCK :
1 X 3-WHEEL COMBINATION LOCK (FB4-4De)
1 X CYLINDER LOCK
ACCESSORIES : 8 X PARTITION

PICTURE : FB4-4Se

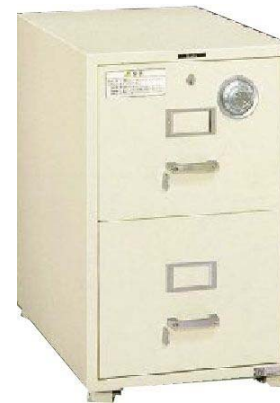


----- AUTO LOCKING SYSTEM -----
WHEN YOU LOCK THE TOP OF THE DRAWER,
OTHER DRAWERS ARE AUTOMATICALLY LOCKED.

FA4-2Se/ FA4-2De

OUTSIDE : W465 X D778 X H754 mm
DRAWER INSIDE :
W321 X D526 X H261 mm
NET WEIGHT : 160 kg
LOCK :
1 X 3-WHEEL COMBINATION LOCK (FA4-2De)
1 X CYLINDER LOCK
ACCESSORIES : 4 X PARTITION

PICTURE : FA4-2De



PICTURE : FA4-4De



FA4-4Se/ FA4-4De

OUTSIDE : W465 X D778 X H1422 mm
DRAWER INSIDE :
W321 X D526 X H261 mm
NET WEIGHT : 285 kg
LOCK :
1 X 3-WHEEL COMBINATION LOCK (FA4-4De)
1 X CYLINDER LOCK
ACCESSORIES : 8 X PARTITION

FIRE - RESISTIVE CONTAINER

INSIDE TEMPERATURE UNDER 50°C/ HUMIDITY UNDER 80%
1-HOUR FIRE-RESISTANCE
CONDITIONS : INSTALL INSIDE BURGLAR-RESISTIVE SAFE OR
FIRE-RESISTIVE SAFE (OF MORE THAN 2-HOUR RESISTANCE)

Data Cabinet

IF YOU HAVE A SAFE ALREADY,
YOU CAN KEEP FLOPPY DISK, MO,
ANYTHING WEAKEN AGAINST HEAT
WITHOUT BUYING A NEW DATA FILING SAFE.



DCB-1

OUTSIDE : W375 X D328 X H355 mm
INSIDE : W250 X D185 X H230 mm
NET WEIGHT : 22 kg
CAPACITY : 10.6 lit.
LOCK :
1 X CYLINDER LOCK
CAPACITY :
3.5 INCH MICRO FLOPPY DISK : 140 PCS.
5 INCH MICRO FLOPPY DISK : 60 PCS.
3.5 INCH MAGNETIC OPTICAL DISK : 60 PCS.



ABOVE PICTURE : PS-12b (EX.)



SPECIAL FIRE - RESISTIVE SAFE

TS-15 BY JAPAN SAFE FURNITURE
1-HOUR FIRE-RESISTANCE FOR FLEXIBLE CARTORIDGE DISK BY JIS : FR·1T
INSIDE TEMPERATURE UNDER 52°C/ HUMIDITY UNDER 80%

SUITABLE TO KEEP FLOPPY DISK, MO,
JEWELRY, CAMERA, WATCH,
ANYTHING WEAKEN AGAINST HEAT.

D Series – combination lock type -



D-14

OUTSIDE : W862 X D803 X H1096 mm
INSIDE : W533 X D390 X H690 mm
NET WEIGHT : 570 kg
CAPACITY : 143 lit.
LOCK :
1 X 3-WHEEL COMBINATION LOCK
1 X CYLINDER LOCK
WITH RELOCKING DEVICE
OPTIONAL ITEM :
ADJUSTABLE SHELF
PULL-OUT SHELF
SHELF FOR MT
TRAY

D-29

OUTSIDE : W862 X D803 X H1791 mm
INSIDE : W533 X D390 X H1385 mm
NET WEIGHT : 830 kg
CAPACITY : 288 lit.
LOCK :
1 X 3-WHEEL COMBINATION LOCK
1 X CYLINDER LOCK
WITH RELOCKING DEVICE
OPTIONAL ITEM :
ADJUSTABLE SHELF
PULL-OUT SHELF
SHELF FOR MT
TRAY



SPECIAL FIRE - RESISTIVE SAFE

CHOOSE SUITABLE TRAY FROM VARIOUS TYPES

Optional Items for D Series



SHELF FOR MT



ADJUSTABLE SHELF

TRAY FOR 3.5 DISK
(FOR MO / FD3.5 etc.)

TRAY FOR CMT
(HORIZONTAL TYPE)

TRAY FOR CMT
(VERTICAL TYPE)

TRAY FOR 5 INCH DISK
(FOR CD* / DVD* / FD5 etc.)

TRAY FOR 5.25 INCH DISK
(FOR M05.25 etc.)

* THE HEAT-RESISTANCE OF OPTICAL DISK
IS UNDER 50°C.



PULL-OUT SHELF